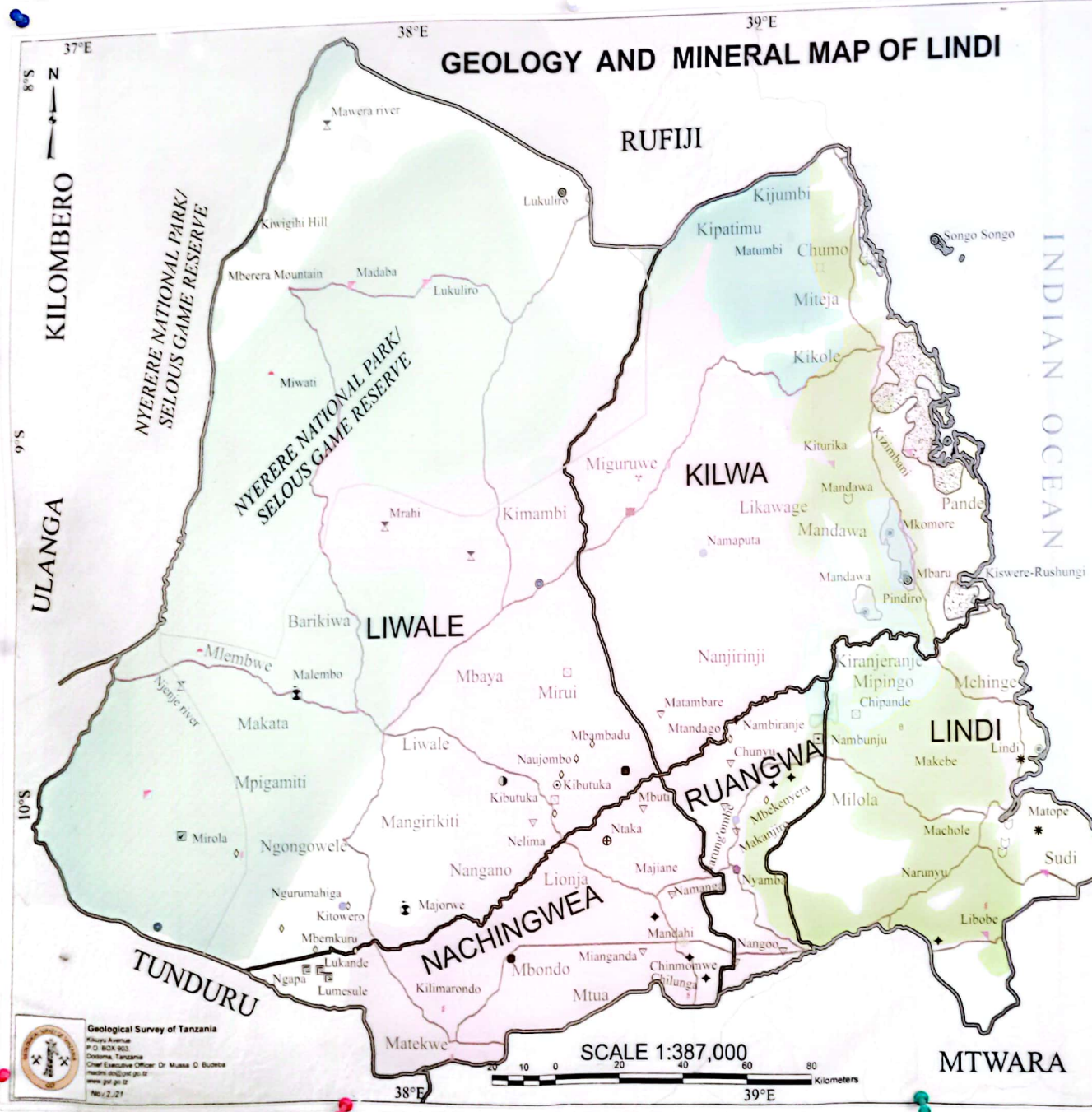


# GEOLOGY AND MINERAL MAP OF LINDI



- Minerals**
- Agate
  - ◻ Almandine
  - ◉ Amazonite
  - ⚡ Bismuth
  - Beryl
  - Copper
  - Carbonate hard rock
  - Feldspar
  - Fluorite
  - Garnet
  - ◊ Gold
  - ♦ Graphite
  - Gypsum
  - Iron ore
  - ◻ Ilmenite
  - Limestone
  - Marble
  - ◻ Manganese
  - ▽ Mica
  - Natural gas
  - ◉ Nickel & Cobalt
  - ◉ Nickel & Copper
  - Phosphate
  - ◻ Ruby
  - ✂ Sand
  - ◻ Sapphire
  - ◻ Salt
  - ◻ Sulphur
  - Uranium
  - Quartz
  - Titanium & Zirconium
  - ◻ Graphite zone
  - ◻ Gypsum zone
  - ◻ Salt zone

- Geology**
- CENOZOIC (0 - 66 Ma)**
- ◻ Predominantly alluvial and eluvial sediments
  - ◻ Terrestrial coarse clastic sediments, higher coastal terrace and laterite
  - ◻ Marine and fluvio-marine sandy-clayey sediments
  - ◻ Marine sandy-carbonaceous-clayey sediments
- PALAEO-MESOZOIC (66 - 540 Ma)**
- ◻ Continental-marine deposits (sandstones, clays, marls, limestones)
  - ◻ Marine deposits (detrital and reef limestones, marls, sandstones, oolites)
  - ◻ Terrestrial clastic sediments, partly with coals (Karoo Supergroup)
- NEOPROTEROZOIC (540 - 1,000 Ma)**
- ◻ Migmatite - granite - meta-sediment (marble, quartzite) complex
  - ◻ Mafic - felsic granulite complex
- MESOPROTEROZOIC TECTONIC-MAGMATIC EVENT (900 - 1,400 Ma)**
- ◻ Orthogneiss complex (Songea, Kimambi)

Geological Survey of Tanzania  
 Plot: A-100  
 P.O. BOX 903  
 Dodoma, Tanzania  
 Chief Executive Officer: Dr. Masha O. Bulewa  
 Head of Department: Dr. Masha O. Bulewa  
 www.gst.go.tz  
 No. 2, 21

SCALE 1:387,000  
 0 20 40 60 80  
 Kilometers

## Legend

### Minerals

- |                       |                        |
|-----------------------|------------------------|
| • Agate               | ☒ Manganese            |
| ☐ Almandine           | ▽ Mica                 |
| ⊙ Amazonite           | ⊙ Natural gas          |
| ⊗ Bismuth             | ⊕ Nickel & Cobalt      |
| ◆ Beryl               | ⊕ Nickel & Copper      |
| ● Copper              | ■ Phosphate            |
| * Carbonate hard rock | ⊗ Ruby                 |
| ⊙ Feldspar            | ⊗ Sand                 |
| ✦ Fluorite            | ⊗ Sapphire             |
| ● Garnet              | ⊗ Salt                 |
| ◇ Gold                | ⊗ Sulphur              |
| ◆ Graphite            | ■ Uranium              |
| ⊙ Gypsum              | ■ Quartz               |
| † Iron ore            | ■ Titanium & Zirconium |
| ☑ Ilmenite            | ■ Graphite zone        |
| ▽ Limestone           | ■ Gypsum zone          |
| ● Marble              | ■ Salt zone            |

### Geology

#### CENOZOIC (0 - 66 Ma)

- ☐ Predominantly alluvial and eluvial sediments
- ☐ Terrestrial coarse clastic sediments, higher coastal terrace and laterite
- ☐ Marine and fluvio-marine sandy-clayey sediments
- ☐ Marine sandy-carbonaceous-clayey sediments

#### PALAEO-MESOZOIC

##### (66 - 540 Ma)

- ☐ Continental-marine deposits (sandstones, clays, marls, limestones)
- ☐ Marine deposits (detrital and reef limestones, marls, sandstones, oolites)
- ☐ Terrestrial clastic sediments, partly with coals (Karoo Supergroup)

#### NEOPROTEROZOIC

##### (540 - 1,000 Ma)

- ☐ Migmatite - granite - meta-sediment (marble, quartzite) complex
- ☐ Mafic - felsic granulite complex

#### MESOPROTEROZOIC TECTONIC -MAGMATIC EVENT

##### (900 - 1,400 Ma)

- ☐ Orthogneiss complex (Songea, Kimambi)